

MarXtar State Management

*"To Plan for Our Future
We Need the Knowledge of Our Present
Given Context by Our Past"*

WHAT IS STATE MANAGEMENT?

MarXtar State Management is a powerful knowledge-based configuration management solution that delivers both real-time and historical insight into the availability and the usage of your environment.

The availability of every system, the state of every user session, the active processes and the changes associated are all combined to give unparalleled insight into the operation of your business. With State Knowledge, planning is more effective and the ability to react correctly dramatically improved.

State Management steps beyond just Knowledge into Control so that Configuration Management is enabled even as far as controlling when your systems are available online.

HOW DOES IT WORK?

State Management operates either **Stand-Alone** or in conjunction with your existing **LANDESK Systems & Security** or **Microsoft SCCM** solutions. Real-time detection of system state is fed back to build a clear picture of your environment at any point in time both present and past.

As a knowledge-based system, our presence across your estate enables control over system availability either independently or as a mechanism to enhance the reach and the success rates of your existing management solutions.

WHO DOES IT BENEFIT?

MarXtar's multi-tiered approach enables State Management to benefit everyone including (but not limited to):

- *First-Level Service Operators*
 - *Simplified Access to Support Tools*
 - *Visibility of Where Users Are and if Available*
 - *Notification of System Availability and User Presence*
- *Systems Administrators*
 - *Enhance Planning for Environment-Wide Updates*
 - *Understand Utilisation of Expensive Assets*
 - *Powerful Configuration Management Policy Engine*
 - *Wake Devices for Out-of-Hours Maintenance*
- *License Managers*
 - *Understand Device, User Launch and Concurrency of business applications*

MarXtar Ltd. Working House, Church Lane, Basingstoke, Hampshire, RG23 8PX
Tel : 01256 3456 20 Email : Sales@MarXtar.com Web : www.MarXtar.com

HOW CAN WE
OPERATE
EFFICIENTLY IF WE
DON'T ACTUALLY
KNOW WHAT IS
BEING USED
EFFECTIVELY?

Even the most gifted of us can only keep track of a small number of things at the same time, yet every day we are expected to make plans for supporting and maintaining our environments based on little more than an assumption of how it behaves.

With State Knowledge we move from 'Assumption-Based' to 'Knowledge-Based' decision making.

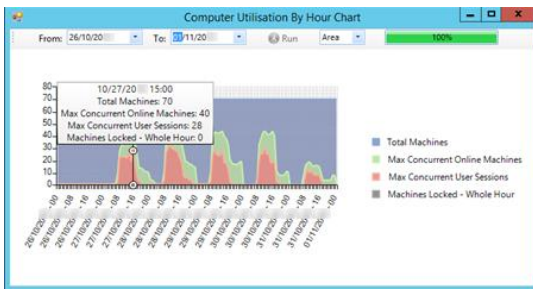
When combined with the ability to actually control what is happening at any time too, including if our systems are actually online, then we have truly achieved State Management.



TURN ME OVER...

SAMPLE STATE MANAGEMENT USE CASES

REAL-TIME & HISTORICAL KNOWLEDGE



Hot-Desking and Shared System Efficiency

- Understand Usage of Shared System Resources
- Don't Purchase Unnecessarily – Reallocate Assets Instead
- Identify Available Hot Desk Systems

Understand Current and Historical States

- Plan for System Outages
- Recognise Power Wastage
- Identify Under Utilised Hardware Assets

Integrated Drill-Down

- **LANDESK or Microsoft SCCM Query & Collection Integration**
- **Built-In Filtering for Enterprise Level or Detailed Level Viewing**

LIVE ALERTING & SUPPORT TOOLS

DeviceName	DeviceState	UserState	MonitorState	IdleState	Minutes	C
MARXTAR101	On	Logged On	Monitor On	In Use	1140	N
MARXTAR102	Off	Logged Off	Monitor Off	None	2895	N
MARXTAR103	On	Logged On	Monitor On	In Use	1125	N
MARXTAR104	On	Logged On	Monitor On	In Use	1125	N
MARXTAR105	On	Logged On	Monitor On	In Use	1125	N

Context Menu:
 LANDesk Tools
 Add Alert...
 Purge Record(s)...
 History
 Dashboard
 Reports

Sub-menu:
 HTML Remote Control
 Classic Remote Control
 Inventory
 Software Distribution

Alert On Device and User Session State

- Notifications to Operators, Groups or Email
- Understand When Devices Become Available
- Faster Response to Customers
- Reduced Contact Attempts

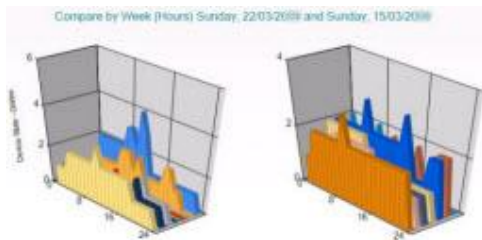
Simplified Access to Support Tools (LANDESK Shown)

- Increase First Call Resolution
- No Need for Complex or Cumbersome Consoles

One-To-One Software Distribution

- Control List of Pre-Configured Tasks
- Improve Customer Service
- Securely Empower First-Level Operators

POWER EFFICIENCY PLANNING



Compare Across Time Periods

- Analyse Impact of Policies
- Recognise Usage Trends
- Plan Against Usage Peaks or Lows

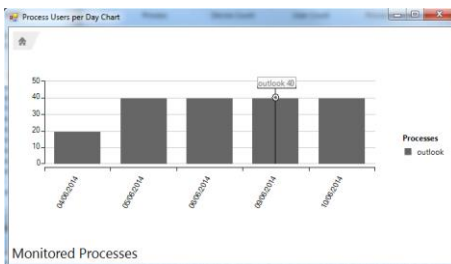
Understand Periods of Low Usage

- Match Work-Time Updates to Periods of Low Utilisation

Retain Configuration Management Ability

- Keep the ability to maintain systems out-of-hours even if Power Management policies are implemented

LICENSING & THIN CLIENT USAGE



Understand Actual Usage of Applications

- Full Historical Trending
- Knowledge of User & Device Based

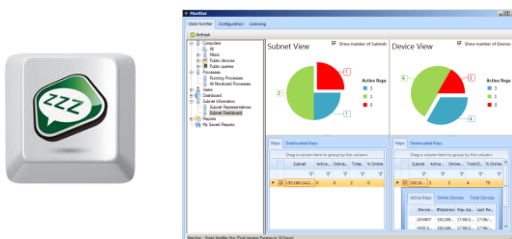
Assess Licensing Impacts

- Device and User Based Usage
- Installation Based & Concurrent Utilisation

Thin Client & VDI Aware

- Analyse Usage on Shared Application Servers
- Non-Persistent VDI Support

CONFIGURATION MANAGEMENT



Accurately Enable Wake-On-WAN & Scheduled Wake Up

- Stand-Alone plus **LANDESK® & Microsoft® SCCM** Support

Powerful & Flexible Policy Engine

- Perfect for Configuration Management Maintenance Windows

Self-Maintaining Dynamic Architecture

- No Administrative Overheads or Infrastructure Dependencies
- Subnet Representative Keep-Alive to Maintain Coverage

Graphical Visibility of Network Availability

- Identify Inaccessible Networks
- Realistic Coverage Expectations

More Information:

